



# USA ORDER FORM

EFFECTIVE FEBRUARY 2023

PURCHASE ORDER #

COMPANY \_\_\_\_\_ SHIP TO \_\_\_\_\_

DATE \_\_\_\_\_ NAME \_\_\_\_\_ PHONE \_\_\_\_\_

CONTACT NAME \_\_\_\_\_ ADDRESS \_\_\_\_\_

EMAIL \_\_\_\_\_ CITY \_\_\_\_\_ STATE \_\_\_\_\_ ZIP \_\_\_\_\_



### Optima™ THORACIC BACK SUPPORT

HCPCS CODE: E2620-E2621

CARBON FIBRE SHELL = WEIGHT SAVINGS UP TO 2.4 LBS WITH FIXED MICRO-MOUNT HARDWARE OPTION



### Optima™ DEEP THORACIC BACK SUPPORT

HCPCS CODE: E2620-E2621

CARBON FIBRE SHELL = WEIGHT SAVINGS UP TO 2.4 LBS WITH FIXED MICRO-MOUNT HARDWARE OPTION

THORACIC SHAPE

Model No. Carbon Fibre	Model NO. Aluminum	Fits Width	Height	\$ Carbon	QTY	\$ Aluminum	QTY
	NOACB1307	13"- 15"	7"			695	
	NOACB1309	13"- 15"	9"			695	
	NOACB1313	13"- 15"	13"			695	
	NOACB1316	13"- 15"	16"			695	
	NOACB1407	14"- 16"	7"			695	
<b>NOCFACB1409</b>	NOACB1409	14"- 16"	9"	<b>895</b>		695	
<b>NOCFACB1413</b>	NOACB1413	14"- 16"	13"	<b>925</b>		695	
<b>NOCFACB1416</b>	NOACB1416	14"- 16"	16"	<b>960</b>		695	
	NOACB1507	15"- 17"	7"			695	
<b>NOCFACB1509</b>	NOACB1509	15"- 17"	9"	<b>895</b>		695	
<b>NOCFACB1513</b>	NOACB1513	15"- 17"	13"	<b>925</b>		695	
<b>NOCFACB1516</b>	NOACB1516	15"- 17"	16"	<b>960</b>		695	
	NOACB1607	16"- 18"	7"			695	
<b>NOCFACB1609</b>	NOACB1609	16"- 18"	9"	<b>895</b>		695	
<b>NOCFACB1613</b>	NOACB1613	16"- 18"	13"	<b>925</b>		695	
<b>NOCFACB1616</b>	NOACB1616	16"- 18"	16"	<b>960</b>		695	
	NOACB1619	16"- 18"	19"			695	
	NOACB1707	17"- 19"	7"			695	
<b>NOCFACB1709</b>	NOACB1709	17"- 19"	9"	<b>895</b>		695	
<b>NOCFACB1713</b>	NOACB1713	17"- 19"	13"	<b>925</b>		695	
<b>NOCFACB1716</b>	NOACB1716	17"- 19"	16"	<b>960</b>		695	
	NOACB1719	17"- 19"	19"			695	
	NOACB1807	18"- 20"	7"			695	
<b>NOCFACB1809</b>	NOACB1809	18"- 20"	9"	<b>895</b>		695	
<b>NOCFACB1813</b>	NOACB1813	18"- 20"	13"	<b>925</b>		695	
<b>NOCFACB1816</b>	NOACB1816	18"- 20"	16"	<b>960</b>		695	
	NOACB1819	18"- 20"	19"			695	
	NOACB1916	19"- 21"	16"			695	
	NOACB1919	19"- 21"	19"			695	
	NOACB2007	20"- 22"	7"			695	
<b>NOCFACB2009</b>	NOACB2009	20"- 22"	9"	<b>895</b>		695	
<b>NOCFACB2013</b>	NOACB2013	20"- 22"	13"	<b>925</b>		695	
<b>NOCFACB2016</b>	NOACB2016	20"- 22"	16"	<b>960</b>		695	
	NOACB2019	20"- 22"	19"			695	

Model No. Carbon Fibre	Model No. Aluminum	Fits Width	Height	\$ Carbon	QTY	\$ Aluminum	QTY
	NOPCB1307	13"- 15"	7"			695	
	NOPCB1309	13"- 15"	9"			695	
	NOPCB1313	13"- 15"	13"			695	
	NOPCB1316	13"- 15"	16"			695	
	NOPCB1407	14"- 16"	7"			695	
<b>NOCFPCB1409</b>	NOPCB1409	14"- 16"	9"	<b>995</b>		695	
<b>NOCFPCB1413</b>	NOPCB1413	14"- 16"	13"	<b>1015</b>		695	
<b>NOCFPCB1416</b>	NOPCB1416	14"- 16"	16"	<b>1055</b>		695	
	NOPCB1507	15"- 17"	7"			695	
<b>NOCFPCB1509</b>	NOPCB1509	15"- 17"	9"	<b>995</b>		695	
<b>NOCFPCB1513</b>	NOPCB1513	15"- 17"	13"	<b>1015</b>		695	
<b>NOCFPCB1516</b>	NOPCB1516	15"- 17"	16"	<b>1055</b>		695	
	NOPCB1607	16"- 18"	7"			695	
<b>NOCFPCB1609</b>	NOPCB1609	16"- 18"	9"	<b>995</b>		695	
<b>NOCFPCB1613</b>	NOPCB1613	16"- 18"	13"	<b>1015</b>		695	
<b>NOCFPCB1616</b>	NOPCB1616	16"- 18"	16"	<b>1055</b>		695	
	NOPCB1619	16"- 18"	19"			695	
	NOPCB1707	17"- 19"	7"			695	
<b>NOCFPCB1709</b>	NOPCB1709	17"- 19"	9"	<b>995</b>		695	
<b>NOCFPCB1713</b>	NOPCB1713	17"- 19"	13"	<b>1015</b>		695	
<b>NOCFPCB1716</b>	NOPCB1716	17"- 19"	16"	<b>1055</b>		695	
	NOPCB1719	17"- 19"	19"			695	
	NOPCB1807	18"- 20"	7"			695	
<b>NOCFPCB1809</b>	NOPCB1809	18"- 20"	9"	<b>995</b>		695	
<b>NOCFPCB1813</b>	NOPCB1813	18"- 20"	13"	<b>1015</b>		695	
<b>NOCFPCB1816</b>	NOPCB1816	18"- 20"	16"	<b>1055</b>		695	
	NOPCB1819	18"- 20"	19"			695	
	NOPCB1916	19"- 21"	16"			695	
	NOPCB1919	19"- 21"	19"			695	
	NOPCB2007	20"- 22"	7"			695	
<b>NOCFPCB2009</b>	NOPCB2009	20"- 22"	9"	<b>995</b>		695	
<b>NOCFPCB2013</b>	NOPCB2013	20"- 22"	13"	<b>1015</b>		695	
<b>NOCFPCB2016</b>	NOPCB2016	20"- 22"	16"	<b>1055</b>		695	
	NOPCB2019	20"- 22"	19"			695	

Continued on next page...

Optima™ THORACIC BACK SUPPORT

Optima™ DEEP THORACIC BACK SUPPORT

Model No. Carbon Fibre	Model NO. Aluminum	Fits Width	Height	\$ Carbon	QTY	\$ Aluminum	QTY
N/A	NOACB2116	21"- 23"	16"	N/A		695	
N/A	NOACB2119	21"- 23"	19"	N/A		695	
N/A	NOACB2213	22"- 24"	13"	N/A		745	
N/A	NOACB2216	22"- 24"	16"	N/A		745	
N/A	NOACB2219	22"- 24"	19"	N/A		745	
N/A	NOACB2316	23"- 25"	16"	N/A		745	
N/A	NOACB2319	23"- 25"	19"	N/A		745	
N/A	NOACB2416	24"- 26"	16"	N/A		745	
N/A	NOACB2419	24"- 26"	19"	N/A		745	
N/A	NOACB2516	25"- 27"	16"	N/A		745	
N/A	NOACB2519	25"- 27"	19"	N/A		745	
N/A	NOACB2616	26"- 28"	16"	N/A		745	
N/A	NOACB2619	26"- 28"	19"	N/A		745	
N/A	NOACB2716	27"- 29"	16"	N/A		745	
N/A	NOACB2719	27"- 29"	19"	N/A		745	
N/A	NOACB2816	28"- 30"	16"	N/A		745	
N/A	NOACB2819	28"- 30"	19"	N/A		745	
N/A	NOACB2916	29"- 30"	16"	N/A		745	
N/A	NOACB2919	29"- 30"	19"	N/A		745	

Model No. Carbon Fibre	Model NO. Aluminum	Fits Width	Height	\$ Carbon	QTY	\$ Aluminum	QTY
N/A	NOPCB2116	21"- 23"	16"	N/A		695	
N/A	NOPCB2119	21"- 23"	19"	N/A		695	
N/A	NOPCB2213	22"- 24"	13"	N/A		745	
N/A	NOPCB2216	22"- 24"	16"	N/A		745	
N/A	NOPCB2219	22"- 24"	19"	N/A		745	
N/A	NOPCB2316	23"- 25"	16"	N/A		745	
N/A	NOPCB2319	23"- 25"	19"	N/A		745	
N/A	NOPCB2416	24"-2 6"	16"	N/A		745	
N/A	NOPCB2419	24"-2 6"	19"	N/A		745	
N/A	NOPCB2516	25"- 27"	16"	N/A		745	
N/A	NOPCB2519	25"- 27"	19"	N/A		745	
N/A	NOPCB2616	26"- 28"	16"	N/A		745	
N/A	NOPCB2619	26"- 28"	19"	N/A		745	
N/A	NOPCB2716	27"- 29"	16"	N/A		745	
N/A	NOPCB2719	27"- 29"	19"	N/A		745	
N/A	NOPCB2816	28"- 30"	16"	N/A		745	
N/A	NOPCB2819	28"- 30"	19"	N/A		745	
N/A	NOPCB2916	29"- 30"	16"	N/A		745	
N/A	NOPCB2919	29"- 30"	19"	N/A		745	

Xtend™ HEIGHT ADJUSTABLE THORACIC BACK SUPPORT

MODEL NO.	Fits Width	Height	\$	QTY
NHAACB1616/20	16"-18"	16"-20"	695	
NHAACB1816/20	18"-20"	16"-20"	695	
NHAACB2016/20	20"-22"	16"-20"	695	
NHAACB2216/20	22"-24"	16"-20"	745	
NHAACB2416/20	24"-26"	16"-20"	745	
Optional: Change cover for incontinent/infection control cover				

Xtend™ DEEP HEIGHT ADJUSTABLE THORACIC BACK SUPPORT

MODEL NO.	Fits Width	Height	\$	QTY
NHAPCB1616/20	16"-18"	16"-20"	695	
NHAPCB1816/20	18"-20"	16"-20"	695	
NHAPCB2016/20	20"-22"	16"-20"	695	
NHAPCB2216/20	22"-24"	16"-20"	745	
NHAPCB2416/20	24"-26"	16"-20"	745	
Optional: Change cover for incontinent/infection control cover				

Xtend™ LOW HEIGHT ADJUSTABLE THORACIC BACK SUPPORT

MODEL NO.	Fits Width	Height	\$	QTY
NHAACB (L) 1213/17	12"-14"	13"-17"	695	
NHAACB (L) 1413/17	14"-16"	13"-17"	695	
NHAACB (L) 1613/17	16"-18"	13"-17"	695	
NHAACB (L) 1813/17	18"-20"	13"-17"	695	
NHAACB (L) 2013/17	20"-22"	13"-17"	745	
NHAACB (L) 2213/17	22"-24"	13"-17"	745	
Optional: Change cover for incontinent/infection control cover				

Xtend™ LOW DEEP HEIGHT ADJUSTABLE THORACIC BACK SUPPORT


MODEL NO.	Fits Width	Height	\$	QTY
NHAPCB (L) 1213/17	12"-14"	13"-17"	695	
NHAPCB (L) 1413/17	14"-16"	13"-17"	695	
NHAPCB (L) 1613/17	16"-18"	13"-17"	695	
NHAPCB (L) 1813/17	18"-20"	13"-17"	695	
NHAPCB (L) 2013/17	20"-22"	13"-17"	745	
NHAPCB (L) 2213/17	22"-24"	13"-17"	745	
Optional: Change cover for incontinent/infection control cover				

THORACIC SHAPE


NOTES

### Classic™ PELVIC BACK SUPPORT

**PELVIC SHAPE**

HCPCS CODE: E2620-E2621	MODEL NO.	Fits Width	Height	\$	QTY
	NACB1616	16"-18"	16"	695	
	NACB1618	16"-18"	18"	695	
	NACB1620	16"-18"	20"	695	
	NACB1816	18"-20"	16"	695	
	NACB1818	18"-20"	18"	695	
	NACB1820	18"-20"	20"	695	
	NACB2016	20"-22"	16"	695	
	NACB2018	20"-22"	18"	695	
	NACB2020	20"-22"	20"	695	
	NACB2216	22"-24"	16"	745	
	NACB2218	22"-24"	18"	745	
	NACB2220	22"-24"	20"	745	

### Classic™ DEEP PELVIC BACK SUPPORT

HCPCS CODE: E2620-E2621	MODEL NO.	Fits Width	Height	\$	QTY
	NPCB1616	16"-18"	16"	695	
	NPCB1618	16"-18"	18"	695	
	NPCB1620	16"-18"	20"	695	
	NPCB1816	18"-20"	16"	695	
	NPCB1818	18"-20"	18"	695	
	NPCB1820	18"-20"	20"	695	
	NPCB2016	20"-22"	16"	695	
	NPCB2018	20"-22"	18"	695	
	NPCB2020	20"-22"	20"	695	
	NPCB2216	22"-24"	16"	745	
	NPCB2218	22"-24"	18"	745	
	NPCB2220	22"-24"	20"	745	

### Armadillo™ BACK SUPPORT

**CUSTOMIZABLE SHAPE**

HCPCS CODE: E2620-E2621	Armadillo™	Fits Width	Back Height	\$	QTY
	NMAPSB14	14"-16"	16"	875	
	NMAPSB16	16"-18"	16"	875	
	NMAPSB18	18"-20"	18"	875	
	NMAPSB18-TALL	18"-20"	20"	875	
	NMAPSB20	20"-22"	18"	875	
	NMAPSB20-TALL	20"-22"	20"	875	
	NMAPSB22	22"-24"	18"	990	
	NMAPSB22-TALL	22"-24"	20"	990	
	NMAPSB24	24"-26"	18"	990	
	NMAPSB24-TALL	24"-26"	20"	990	

### Armadillo™ ADDITIONAL LATERAL CONTOUR ADD-ON

Model No.	\$	QTY
NIB-1937 - 2" Lateral Contour Add-On (Pair)	90	




### MultiFit™ HEAD SUPPORT

HCPCS CODE: E0955

			<b>MODEL NO.</b>	<b>MULTI-ADJUSTABLE PADS</b>	<b>\$</b>	<b>QTY</b>
Contoured (NIB-0785)	Large (NIB-0784)	Extra large (NIB-0818)	NIB-0785	9" x 5" CONTOURED	205	
			NIB-0784	10" x 5" LARGE RECTANGULAR	205	
			NIB-0818	14" x 5" EXTRA-LARGE RECTANGULAR	205	
			<b>MODEL NO.</b>	<b>FEATURES</b>	<b>\$</b>	<b>QTY</b>
Multi-Axis Hardware (NIB-0747)	Head Support Receiver Bracket (NIB-0823)		NIB-0747	MULTI-AXIS HARDWARE	150	
			NIB-0823	HEAD SUPPORT RECEIVER BRACKET	60	
			NIB-1306	FLIP BACK MULTI-AXIS HARDWARE	265	
			NIB-1210	FLIP BACK KIT	110	
			NIB-1200	UNIVERSAL HEAD SUPPORT ADAPTER	70	

## BACK SUPPORT HARDWARE OPTIONS

- All backs come standard with quick release mounting hardware
- The fixed mounting hardware options below are no-charge substitutions for the standard hardware.

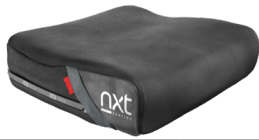
	Model No.	Description	Optima™	Optima™ Carbon	Xtend™	Xtend™ LOW	Classic™	Armadillo	QTY
2-Point Fixed Hardware 	NIB-1207	2 Point fixed hardware	Optional 1	Optional	N/A	N/A	Optional 1	N/A	
2-Point Fixed Micro Mount Hardware 	NIB-1642	Micro Mount 2 Point fixed hardware	Optional 2 & 3	Optional 2 & 3	N/A	N/A	N/A	N/A	
4-Point Fixed Hardware 	NIB-1307	4 Point fixed hardware	Optional 3	Optional 3	Optional 3 & 4	Optional 3 & 4	Optional 3	N/A	

**NOTE:** 1 - Use only on back supports with 16" (40.6cm) back height or lower. 2 - Use only on back supports with 13" (33cm) back height or lower.  
3 - Not width adjustable - fits one back/chair width. 4 - Limits height adjustment to 3"

## BACK SUPPORT ACCESSORIES - PRIVACY FLAP

MODEL NO.	Description	Fits Back Width	\$	QTY
NIB-1938	Extra Small Privacy Flap for 11" - 13" wide back supports	11" - 13" (27.9 - 33.0)	70	
NIB-1078	Small Privacy Flap for 14"-16" wide back supports	14" - 16" (35.6-40.6 cm)	70	
NIB-1079	Medium Flap for 17"-19" wide back supports	17" - 19" (43.2-48.3 cm)	70	
NIB-1080	Large Privacy Flap for 20"-22" wide back supports	20" - 22" (50.8-55.9 cm)	70	
NIB-1081	Extra Large Privacy Flap for 23" - 26" wide back supports	23" - 26" (58.4 - 66.0 cm)	70	

BioFit™



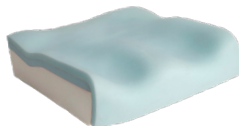
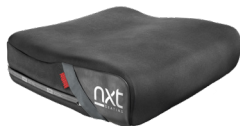
NXT CUSHIONS

BioFit™	Width	Depth	\$	QTY
NXCABF1010	10"	10"	445	
NXCABF1012	10"	12"	445	
NXCABF1014	10"	14"	445	
NXCABF1210	12"	10"	445	
NXCABF1212	12"	12"	445	
NXCABF1214	12"	14"	445	
NXCABF1312	13"	12"	445	
NXCABF1314	13"	14"	445	
NXCABF1315	13"	15"	445	
NXCABF1316	13"	16"	445	
NXCABF1412	14"	12"	445	
NXCABF1414	14"	14"	445	
NXCABF1415	14"	15"	445	
NXCABF1416	14"	16"	445	
NXCABF1515	15"	15"	445	
NXCABF1516	15"	16"	445	
NXCABF1517	15"	17"	445	
NXCABF1518	15"	18"	445	
NXCABF1519	15"	19"	445	
NXCABF1520	15"	20"	445	
NXCABF1615	16"	15"	445	
NXCABF1616	16"	16"	445	
NXCABF1617	16"	17"	445	
NXCABF1618	16"	18"	445	
NXCABF1619	16"	19"	445	
NXCABF1620	16"	20"	445	
NXCABF1716	17"	16"	445	
NXCABF1717	17"	17"	445	
NXCABF1718	17"	18"	445	
NXCABF1719	17"	19"	445	
NXCABF1720	17"	20"	445	
NXCABF1816	18"	16"	445	
NXCABF1817	18"	17"	445	

BioFit™	Width	Depth	\$	QTY
NXCABF1818	18"	18"	425	
NXCABF1820	18"	20"	480	
NXCABF1822	18"	22"	480	
NXCABF1916	19"	16"	480	
NXCABF1917	19"	17"	480	
NXCABF1918	19"	18"	480	
NXCABF1919	19"	19"	480	
NXCABF1920	19"	20"	480	
NXCABF2016	20"	16"	480	
NXCABF2017	20"	17"	480	
NXCABF2018	20"	18"	480	
NXCABF2020	20"	20"	480	
NXCABF2022	20"	22"	480	
NXCABF2116	21"	16"	480	
NXCABF2118	21"	18"	480	
NXCABF2120	21"	20"	480	
NXCABF2216	22"	16"	480	
NXCABF2218	22"	18"	480	
NXCABF2220	22"	20"	480	
NXCABF2222	22"	22"	480	
NXCABF2316	23"	16"	480	
NXCABF2318	23"	18"	480	
NXCABF2320	23"	20"	480	
NXCABF2416	24"	16"	480	
NXCABF2418	24"	18"	480	
NXCABF2420	24"	20"	480	
NXCABF2422	24"	22"	480	
NXCABF2616	26"	16"	520	
NXCABF2618	26"	18"	520	
NXCABF2620	26"	20"	520	
NXCABF2622	26"	22"	520	

Optional: Change cover for incontinent/infection control cover

NüFit™



NüFit™	Width	Depth	\$	QTY
NXCANF1616	16"	16"	415	
NXCANF1618	16"	18"	415	
NXCANF1620	16"	20"	415	
NXCANF1816	18"	16"	415	
NXCANF1818	18"	18"	415	
NXCANF1820	18"	20"	415	
NXCANF2016	20"	16"	415	
NXCANF2018	20"	18"	415	
NXCANF2020	20"	19"	415	
NXCANF2216	22"	16"	445	
NXCANF2218	22"	18"	445	
NXCANF2220	22"	20"	445	

Optional: Change cover for incontinent/infection control cover

**SEATING AND CUSHION ACCESSORIES**

MODEL NO.	Description	Fits Back Width	\$	QTY
RSSI 1600	Solid Seat Insert	Fits cushions 16" & 17" wide (40.6 & 43.2 cm) and 14"-18" deep (35.6-45.7 cm)	80	
RSSI 1600	Solid Seat Insert	Fits cushions 18" & 19" wide (45.7 & 48.3 cm) and 14"-18" deep (35.6-45.7 cm)	80	
RSSI 1600	Solid Seat Insert	Fits cushions 20"-22" wide (50.8-55.9 cm) and 18"-20" deep (45.7-50.8 cm)	80	